



ALUGRIP6 PROFILE SYSTEM

Product Brochure 2020

act

ALUGRIP6 PROFILE SYSTEM

The Alugrip range is a set of aluminium profiles and accessories which used together create numerous screening and shielding applications to service the office, retail and leisure environments.

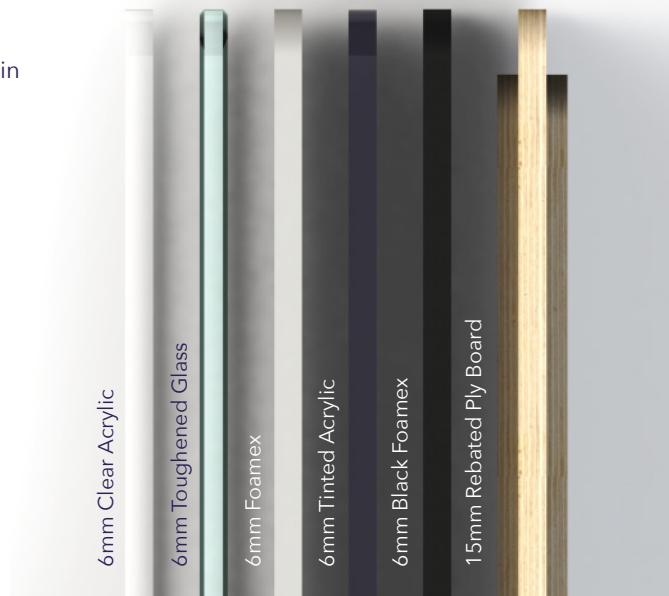
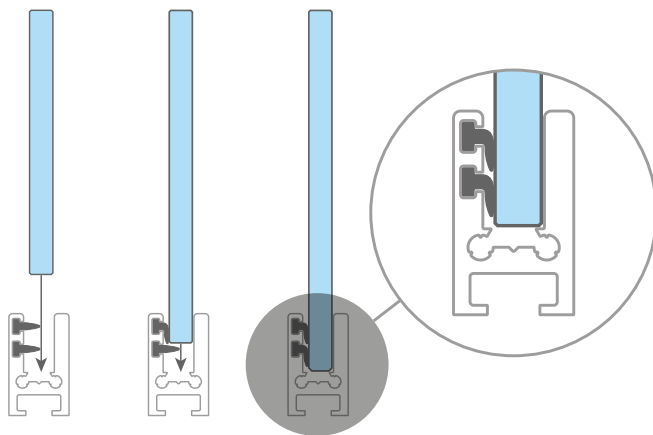
Alugrip is used in conjunction with various sheet materials including Acrylic, Glass, PETG, Foam PVC, Polycarbonate and Antalis' exclusive **Xanita Board**.

Alugrip profiles can be used to create screens to protect during the covid-19 pandemic, but have many other longer term applications.



ALUGRIP6

The Alugrip6 suite of profiles have been designed specifically for the manufacture of a wide range of screens and structures. The satin anodised extruded aluminium profiles incorporate specially engineered rubber fins to offer unparalleled levels of stability.



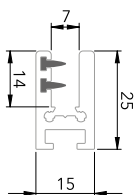
Although Alugrip6 holds its panels extremely firm, panels can still be removed and replaced which makes the system ideal for signage and other graphic solutions that need updating on a regular basis, without the need for any tools or specialist equipment.

Alugrip6 is designed to take any 6mm thick panel material. Which allows for the easy installation of various finishes. Above are a few examples but we can offer much more.

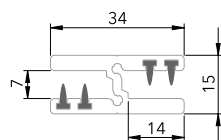
The Profiles

The Alugrip6 suite of profiles permits simple, tool free assembly and comprises five complementary variants that are stylish and robust, yet unobtrusive.

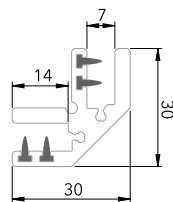
One-Way



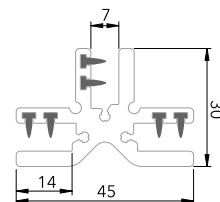
Two-Way In-line



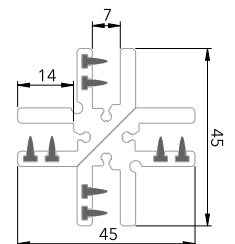
Two-Way 90°



Three-Way



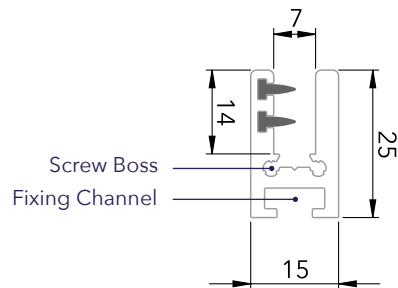
Four-Way



- Satin anodised, precision extruded 6063 aluminium profiles
- Tool free assembly of panels, easy to clean
- Made from 60% recycled content
- Supplied in bar length or cut to size and deburred
- Wide range of base plates and end-caps
- Compatible with a wide range of 6mm substrates, including acrylic, glass, polycarbonate, PETG, ACM and fibre board panels



ALUGRIP6 ONE-WAY



Wall Fixing Kit



End Caps

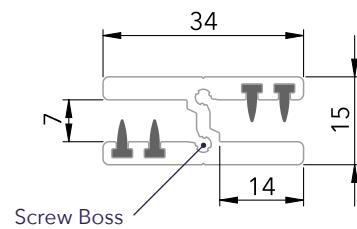
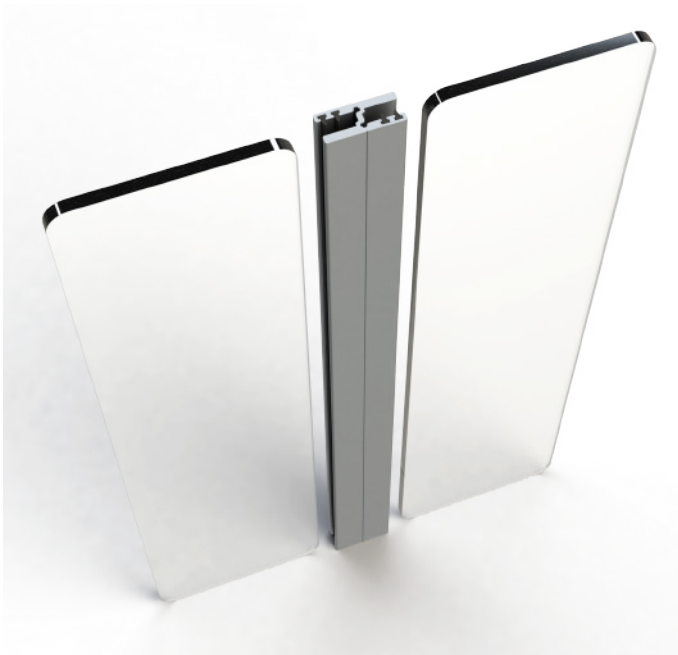


Base Plate*



*Base plate can be supplied with rubber non-slip pad / adhesive velcro tape / double sided adhesive tape / or screws as shown.

ALUGRIP6 TWO-WAY IN-LINE



End Caps

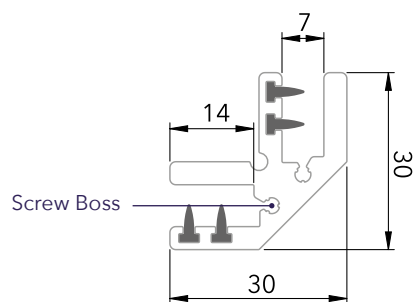


Base Plate*



*Base plate can be supplied with rubber non-slip pad / adhesive velcro tape / double sided adhesive tape / or screws as shown.

ALUGRIP6 TWO-WAY 90°



End Caps

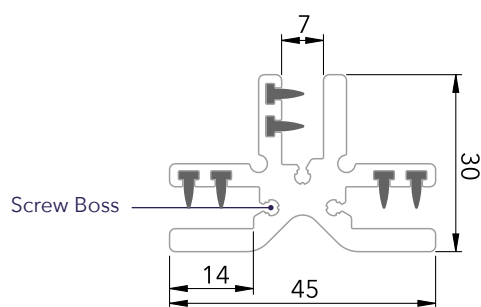


Base Plate*



*Base plate can be supplied with rubber non-slip pad / adhesive velcro tape / double sided adhesive tape / or screws as shown.

ALUGRIP6 THREE-WAY



End Caps

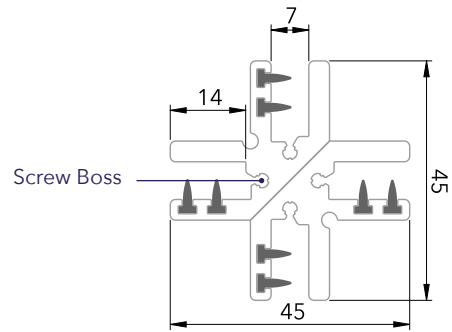


Base Plate*



*Base plate can be supplied with rubber non-slip pad / adhesive velcro tape / double sided adhesive tape / or screws as shown.

ALUGRIP6 FOUR-WAY



End Caps



Base Plate*



*Base plate can be supplied with rubber non-slip pad / adhesive velcro tape / double sided adhesive tape / or screws as shown.

ALUGRIP6 ACCESSORIES

Free-Standing Bases

Set of bases designed to create low level (1000mm high maximum) free-standing screen solutions.



W: 155mm D: 175mm
H: 28-32mm (dependent on fixing method)



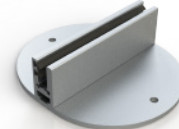
W: 155mm D: 175mm
H: 28-32mm (dependent on fixing method) Base to flush fix screen to front edge of the mounting surface. *Must be fixed in place*



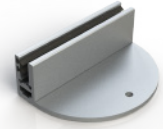
Silver
W: 200mm D: 28mm H: 250mm



Clear Acrylic
W: 200mm D: 28mm H: 250mm



W: 84mm D: 100mm
H: 28-32mm (dependent on fixing method)



W: 84mm D: 58mm
H: 28-32mm (dependent on fixing method)

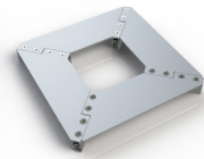
Support Bases

Set of smaller bases designed to be used in conjunction with support posts. These bases provide stability to wide divider panels.

Desk Clamps



Structure Accessories



W: 84mm D: 100mm
H: 28-32mm (dependent on fixing method)

Four-way nested corner support bracket to strengthen 90 degree panel connections. The bracket is designed to nest together which allows the support of a one, two and four-way joint.

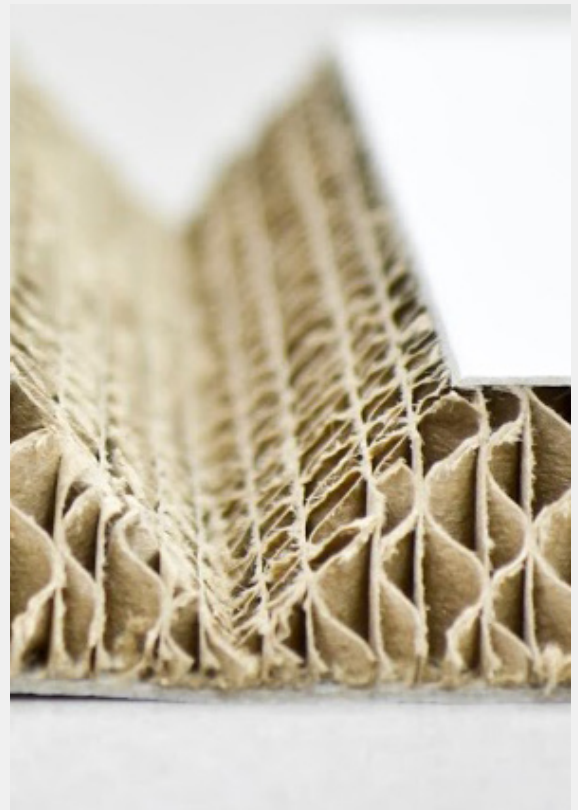
ALUGRIP6 AND XANITA

Alugrip accessories can be used to create free-standing screens and dividers. Combined with the Alugrip profiles, beautiful desk dividers are created. Simple, tool free assembly, easy to clean and long lasting solution for all environments.

The Alugrip system is a perfect partner for Antalis' **Xanita Board** panels. 100% fibre-based panels that have near the strength of MDF but are 75% lighter. These panels can be used plain or printed with your chosen design, corporate logo or message. **Xanita Print** is Antalis' exclusive closed-cell fibre board available in a sheet size of 2440 x 1220 x 6mm, optimised to fit the Alugrip system.

Xanita

- 100% fibre-based board made from recycled, repulped kraft board
- Extremely strong, but extremely lightweight
- Less than 1.3kg/m² with a crush resistance of 60 tonne/m²
- Directly printable
- Recyclable in normal waste paper streams



ALUGRIP6 AND XANITA

Alugrip and **Xanita** can combine to create various applications such as floating wall panels and signage.



Free standing dividers can be created using Alugrip and **Xanita**. Perfect for any environment where segregation or privacy is required. Create an office pod utilising Alugrip and **Xanita** or a combination of materials. Print with any design to blend in with the office environment or to carry a message or branding of your choice.



ALUGRIP6 APPLICATIONS

Alugrip can be used to hold various plastic panels. Clear, coloured or printed panels including Acrylic, Polycarbonate and Foam PVC can be used with the Alugrip profile system. Alugrip can be used in retail environments, bars and restaurants to protect workers and customers during the covid-19 pandemic.



Images shown are for illustrative purposes only and may not be a reflection of the product. Item codes and descriptions are correct at the time of print. ACT reserves the right to change product specifications.

F1 Capital Point
Capital Business Park
Cardiff
CF3 2PY
029 2081 7900
info@actrepro.co.uk
actrepro.co.uk